

LEIGHTRONIX, INC.

TOTAL IMPORT ▶▶▶

Video Servers • Television Automation



© 2007–2015 LEIGHTRONIX, INC. All Rights Reserved.
This information is subject to change without notice.

NEXUS® is a registered trademark of **LEIGHTRONIX, INC.**
UltraNEXUS™, MINI-T-NX™, TCD/NX™, WinLGX™ and Total Import™ are trademarks of
LEIGHTRONIX, INC.

LEIGHTRONIX, INC.
1125 N Cedar Rd
Mason, MI 48854
Ph: (517) 694-8000 or 1-800-243-5589
Fax: (517) 694-1600
www.leightronix.com

TABLE OF CONTENTS

INTRODUCTION.....	3
OPERATING TOTAL IMPORT BASIC	4
IMPORTING MPEG FILES ONTO YOUR HARD DRIVE(S).....	7
GLOSSARY	9

LIST OF TABLES AND ILLUSTRATIONS

ILLUSTRATION 1, TOTAL IMPORT BASIC MAIN WINDOW.....	4
ILLUSTRATION 2, TOTAL IMPORT DVD "SOURCE" PANEL	4
ILLUSTRATION 3, TOTAL IMPORT "SETTINGS" PANEL	5
ILLUSTRATION 4, TOTAL IMPORT "SETTINGS" PANEL WITH SELECTABLE VIDEO BIT RATE	5
ILLUSTRATION 5, TOTAL IMPORT "DESTINATION" PANEL	6
ILLUSTRATION 6, WINLGX STORAGE MANAGER WINDOW	7

INTRODUCTION

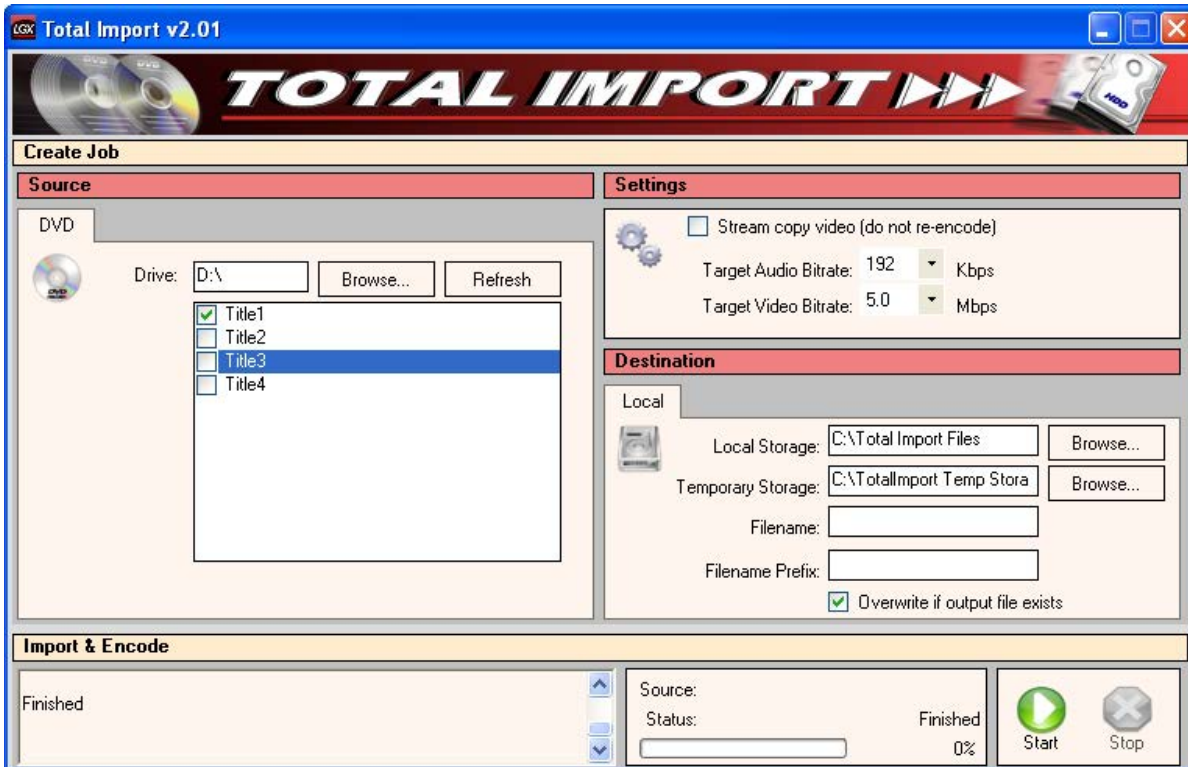
In a few steps, Total Import allows you to create high quality digital video files from non-encrypted MPEG-1 and MPEG-2 DVDs for the following LEIGHTRONIX server products: UltraNEXUS, NEXUS, MINI-T-NX, and TCD/NX. Just insert a DVD into your PC's disc drive and specify where on your PC or network you would like to save the digital video files. You may also customize the files for your video system by changing the Total Import encoding settings and filename assignments.

Each title on a DVD is segmented into one or more ½ hour MPEG-1 or 2 video and audio files. Total Import saves the files within the selected DVD title on your PC or network and then converts the files into one industry standard MPEG-2 file with layer 2 audio. Once converted, simply use the Storage Manager in the LEIGHTRONIX management software, WinLGX, to transfer the MPEG file from your PC to your LEIGHTRONIX server's media storage area.

OPERATING TOTAL IMPORT BASIC

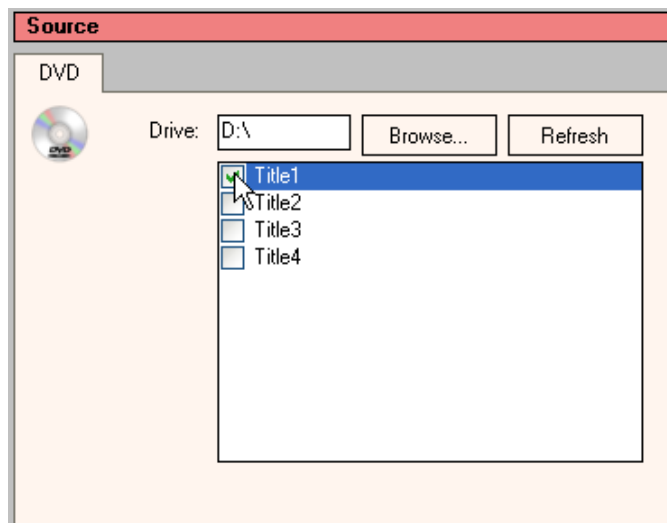
1. Double click on the Total Import desktop icon to display the Total Import Basic program window (see Illustration 1, Total Import Basic Main Window).

Illustration 1, Total Import Basic Main Window



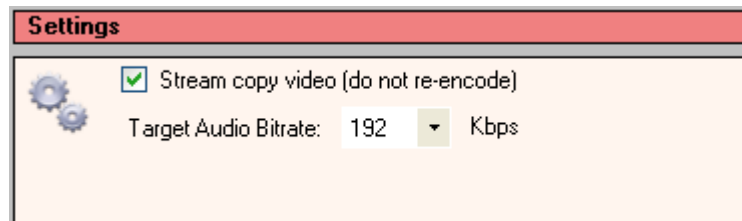
2. Insert a DVD into your PC's DVD drive. Load the DVD titles (files) into the "Source" panel on the Total Import window according to the following steps (see Illustration 2):

Illustration 2, Total Import DVD "Source" Panel



- a. Click the “Browse” button. In the “Browse for folder” window that appears, navigate to your local DVD drive and select the DVD drive letter. Click “OK” to display a list of your DVD’s titles on the “Source” panel.
 - b. Select each DVD title you would like to import by checking the boxes to the left of the titles. A selected title will have a green checkmark in its box.
3. In the “Settings” panel, you may select your audio and video target bit rates for encoding. Perform the following steps:
- a. Select the target audio bit rate that will be used to encode the DVD audio files into Audio layer II.
 - b. For the target video bit rate, LEIGHTRONIX bases the following recommendations on your video system:
 - **UltraNEXUS, NEXUS, and TCD/NX Users:** keep the “Stream copy video” option checked (see Illustration 3) to leave the video for your DVD files at its original quality. Re-encoding the video at a lower bit rate may possibly degrade the quality of the video.

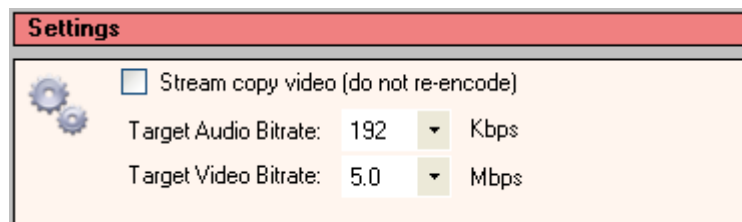
Illustration 3, Total Import "Settings" Panel



NOTE: If you experience sync problems between your DVD video and audio files in the final MPEG-2 file or you just want to create a smaller file, you may uncheck the “Stream copy video” option and select a video bit rate for encoding (see Illustration 4). While a lower video bit rate may result in a smaller MPEG file size, keep in mind the file quality may also be lower.

- **MINI-T-NX Users:** uncheck the “Stream copy video” option to reveal the “Target Video Bitrate” field (see Illustration 4). Set the video bit rate to no higher than 5.0 Mbps for optimal playback on your MINI-T’s internal MPEG player.

Illustration 4, Total Import "Settings" Panel with Selectable Video Bit Rate



- Under “Destination,” specify where on your PC you would like your newly encoded MPEG file(s) saved (see Illustration 5). Total Import will create a separate MPEG file for each DVD title within the specified storage area.

Illustration 5, Total Import "Destination" Panel

The screenshot shows the 'Destination' panel with the following fields and controls:

- Local Storage:** C:\Total Import Files (with a 'Browse...' button)
- Temporary Storage:** C:\TotalImport Temp Stora (with a 'Browse...' button)
- Filename:** (empty text box)
- Filename Prefix:** promotional_video
- Overwrite if output file exists

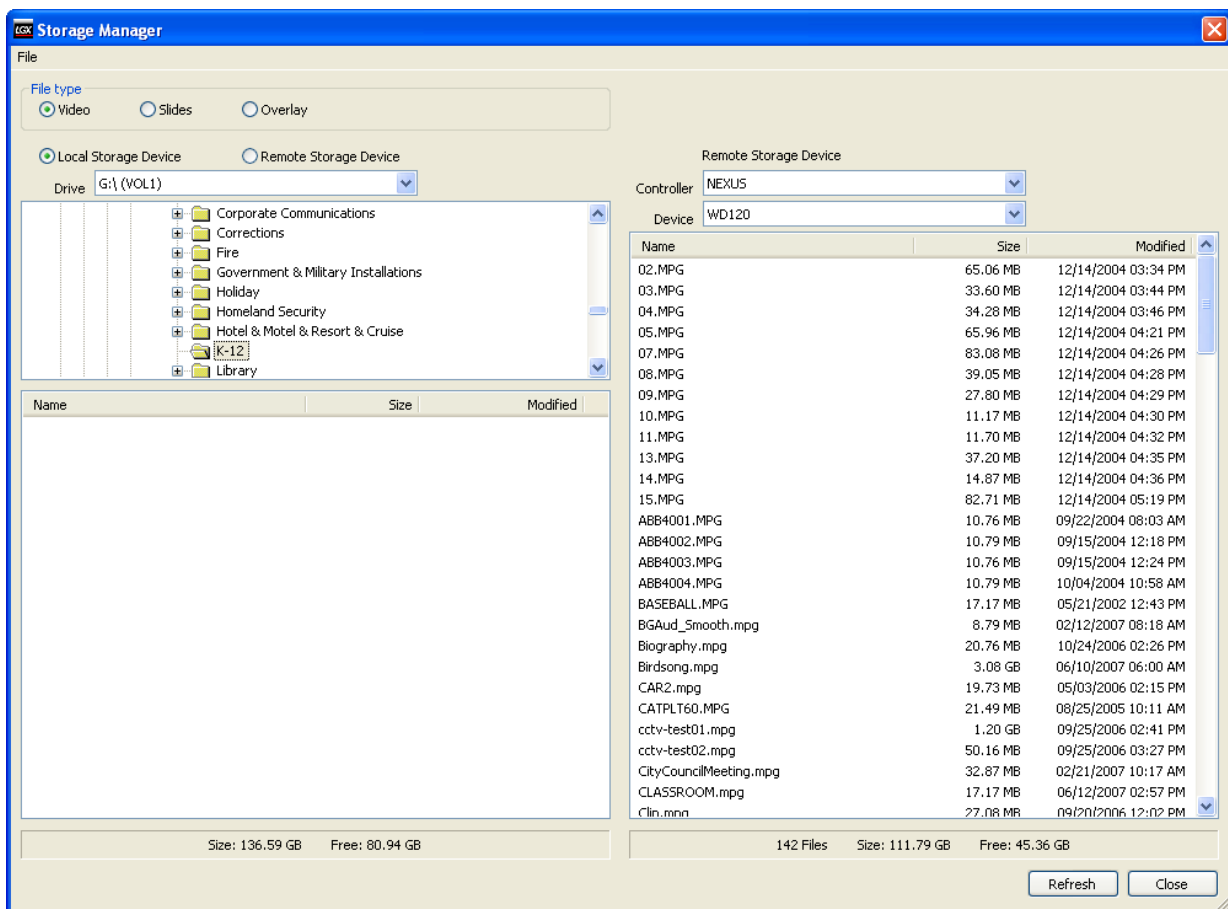
- Click the “Browse” button and in the “Browse for folder” window that appears, navigate to a storage area on your PC large enough to hold the MPEG files. The Total Import encoding process will create MPEG files that are larger than the original DVD titles.
 - Use the “Temporary Storage” field’s “Browse” button to specify where on your PC you would like Total Import to store the imported DVD titles. Total Import automatically deletes the imported titles once they are converted into an MPEG-2 file.
 - Assign filenames with either the “Filename” or “Filename Prefix” field as follows:
NOTE: LEIGHTRONIX servers do not recognize filenames with spaces.
 - “Filename”: *this field becomes available if you are only converting one title.* Enter up to 27 characters, no spaces, in the field. Total Import will automatically add “.mpg” to the filename.
 - “Filename Prefix”: *if you are converting more than one title, the “Filename” field is disabled and the “Filename Prefix” field becomes available.* Enter up to 17 characters, no spaces, in the field and your entry will be added before each converted DVD title’s job ID and title numbers (for example, “promotional_video-DVD000-01.mpg”).
 - Check the “Overwrite” box if you want to save the file over an existing file with the same name.
- Click the “Start” button to import and encode the DVD titles. The percentage of the job completed will be displayed in the “Source” panel next to the “Start” and “Stop” buttons. Click “Stop” if you need to prematurely end the job. Any of the job’s DVD titles not fully encoded will need to be reimported and encoded from the beginning.

IMPORTING MPEG FILES ONTO YOUR HARD DRIVE(S)

Once you have finished importing and encoding your DVD titles through Total Import, use the Storage Manager in WinLGX to transfer the new MPEG files to your LEIGHTRONIX system's media storage area.

1. Open WinLGX and log into your LEIGHTRONIX server/controller.
2. From the "Tools" menu, select "Storage manager" to open the window for managing your controller's digital file storage (see Illustration 6, WinLGX Storage Manager Window).

Illustration 6, WinLGX Storage Manager Window



3. Under "File type," select "Video" to display the MPEG video files view.
4. From the left side of the Storage Manager window, select "Local Storage Device" and navigate to the folder on your PC or network containing your MPEG files encoded through Total Import.
5. On the right side of the Storage Manager window, select your server/controller from the "Controller" drop down menu. From the "Device" drop down menu, select the hard drive that you want to store your MPEG files.

6. Transfer your MPEG files onto the selected hard drive by performing the following steps:
 - a. Double click or right click on your MPEG file and either select “Copy” or “Move” from the menu that appears. Copy will place a duplicate of the file on your hard drive, while move removes the file from your PC and places it on your hard drive.
 - b. You will be prompted by a dialog box asking whether or not you’d like to perform the copy or move operation. Click the “Add to library” option box if you’d also like to create a library resource item for the file and then select “Yes” to complete the operation.
7. When you are finished, click the “Close” button to exit the “Storage Manager” window.
8. Refer to your LEIGHTRONIX manual for instructions on how to schedule or immediately display MPEG files on your system’s internal MPEG player(s).

GLOSSARY

The following terms are used throughout this manual.

TERM	DEFINITION
Bit Rate	Bit rate is the speed at which pieces of information are transmitted. A bit is the single smallest piece of information that is transmitted, and the speed is expressed as the number of bits that are transmitted per second.
Controller	Provides unattended, automatic control over a wide variety of video devices including digital video servers, digital disc recorders, DVD players, video/audio routing switchers, VCRs, and the like
Encoder	A software program and/or hardware device that converts a signal back into a coded format
MPEG	Moving Pictures Expert Group; standards for compressing digital video and audio data
PC	Personal Computer
Source	Input (video and/or audio)
Video	MPEG file