

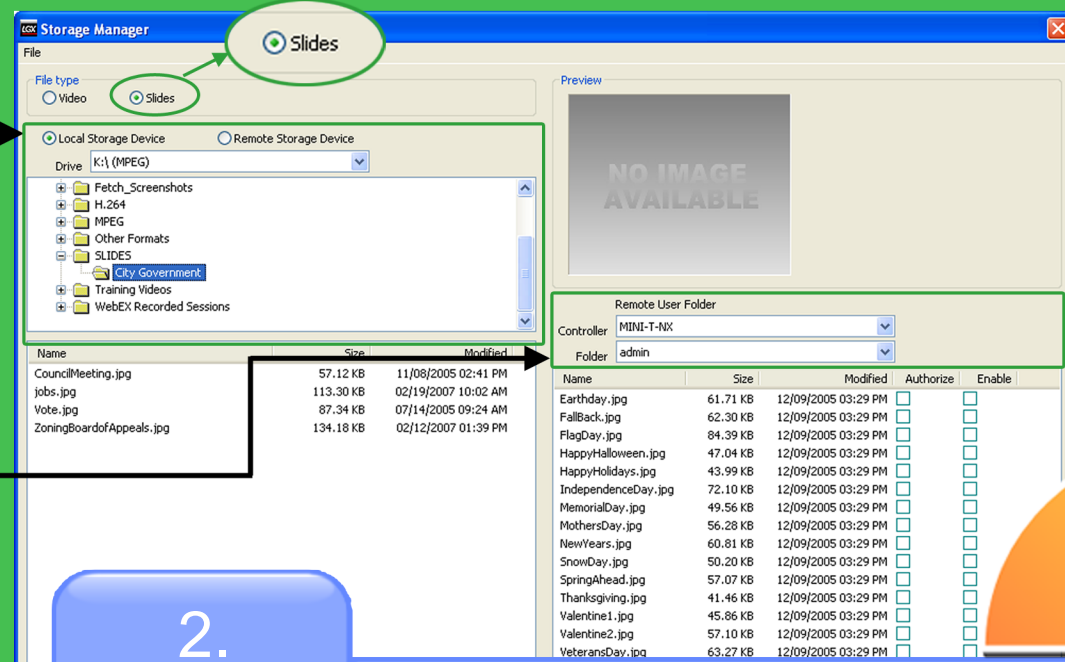
UPLOADING SLIDES to the UltraNEXUS-SDI, UltraNEXUS, NEXUS, & MINI-T-NX

1.

Run WinLGX and log into your controller. Select "Storage Manager" from the "Tools" menu to display the window for managing digital file storage. Choose the "Slides" file type and navigate to your storage areas according to the following steps:

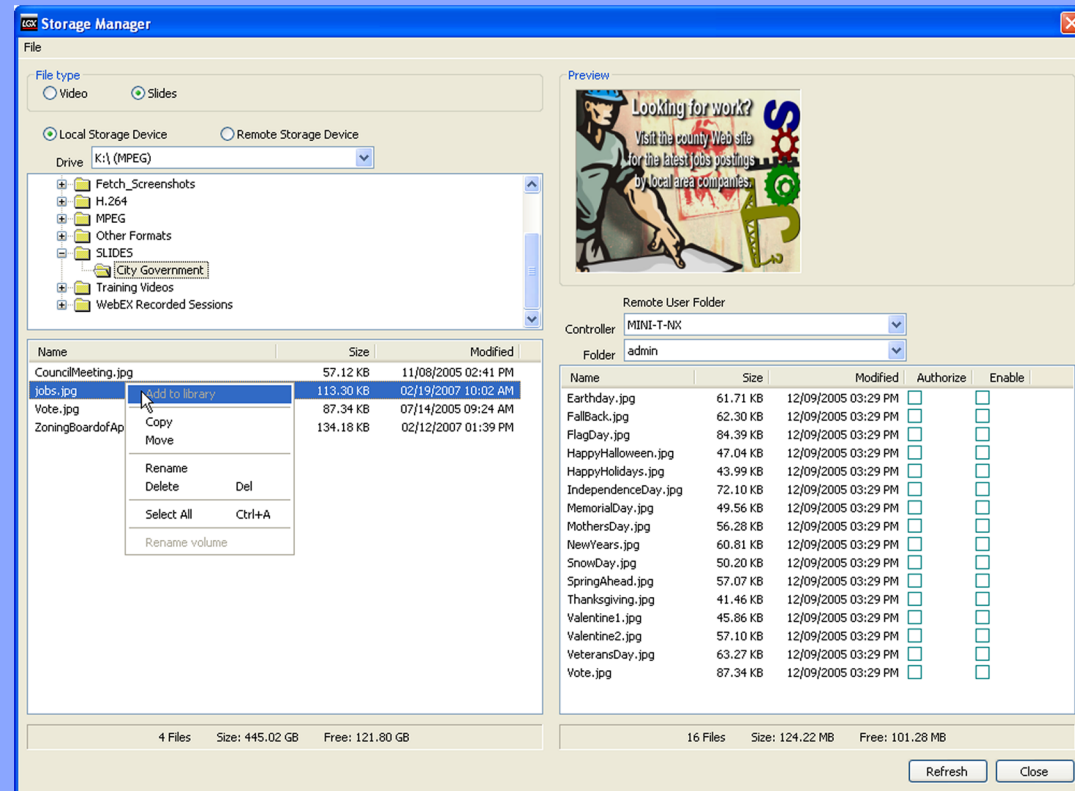
On the left side of the screen, select the "Local Storage Device" option and use the "Drive" drop down menu to navigate to the folder containing the slide you want to upload.

On the right side of the screen, use the "Folder" drop down menu to select the user folder that you want to hold the new slide.



2.

Right click on a slide you wish to upload to display the file management pop-up menu. Add the slide to the selected user folder by selecting either "Move" to transfer the file from its local storage area or "Copy" to create a duplicate of the slide on the controller.

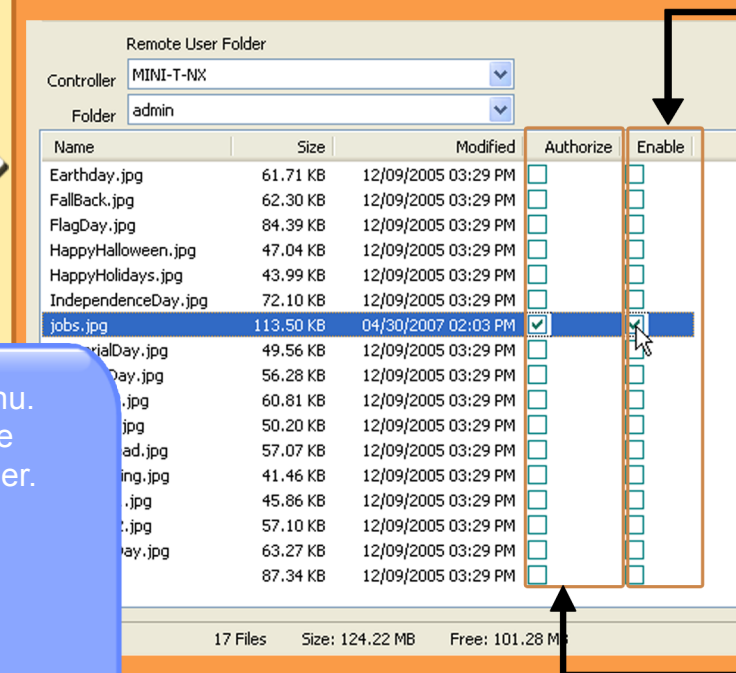


Each user account on your controller is given a user folder for slide storage. Users with the appropriate rights can upload JPEG slides into their user folders.

- NOTES:
- The MINI-T-NX can hold a total of up to 300 JPEG slides on its compact flash.
 - UltraNEXUS-SDI/UltraNEXUS/NEXUS users also have the option of using WebNEXUS to upload, enable, and authorize slides. See the *NEXUS Series Manual* for more details.

3.

Enable and authorize your slide for display in slide shows. These settings do not affect individually displayed slides.



Indicate the slide is appropriate for display in slide shows by checking the "Enable" box next to the uploaded slide.

Approve the slide for on-air display in slide shows by checking the "Authorize" box. The "admin" user has the ability to authorize slides in all users folders. All other users must have one of the following user rights in order to authorize a slide:

- "Automatic slide authorization": slides uploaded by users with this right will be automatically authorized
- "Slide administrator": gives users the ability to authorize slides in all user folders.

4.

When finished uploading slides, click the "Close" button to exit the "Storage Manager" window. Turn this sheet over to learn how to schedule and immediately display your slides.

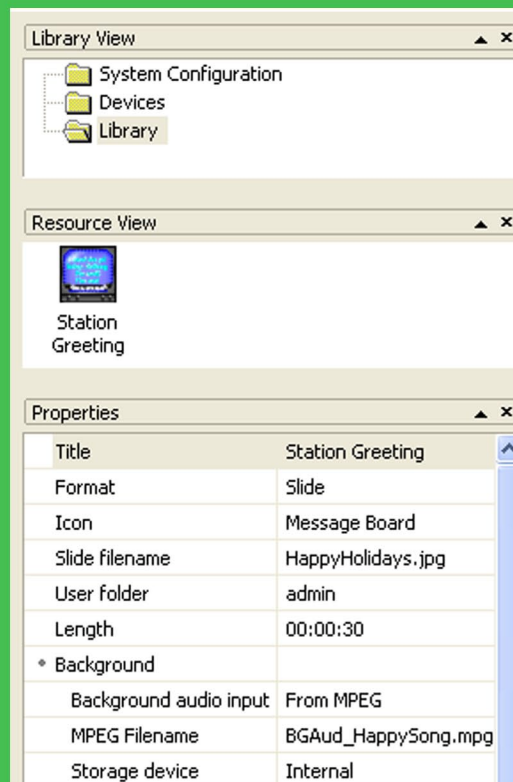
SCHEDULING SLIDES FOR DISPLAY

Once slides have been uploaded into user folders, they can be scheduled for display individually or in sequences known as slide shows on your controller's internal MPEG player(s). Each slide within a slide show will automatically display for 10 seconds at a time (UltraNEXUS-SDI/UltraNEXUS/NEXUS users may change this value from the Web-NEXUS interface). Follow the steps below to schedule your slides for display.

1.

Create slide and slide show library resources for slides you would like to schedule for display. Select the "Library" folder and right click in the "Resource View." Select "New" in the pop-up menu that appears and perform the following steps:

- Name your resource for quick reference in the "Title" field.
- In the "Format" drop down menu, select "Slide" or "Slide Show."
- Select the JPEG slide or slides you want to display as follows:
 - Slide: with the "Slide filename" field, select your JPEG slide file
 - Slide Show: with the "User list" field, select one or more user folders containing the slides you want to display. The slides within the selected user folders will be displayed in the slide show.
- "Length" field: enter the amount of time you would like the slide or slide show to display.
- You can also add audio to your slide or slide show with the "Background" fields. You have the option of using an MPEG audio file on your hard drive (select "From MPEG" from the "Background audio input" drop down menu and then load a file with the "MPEG Filename" field) or selecting one of your inputs to play behind the slide (select an input from the "Background audio input" drop down menu).



2.

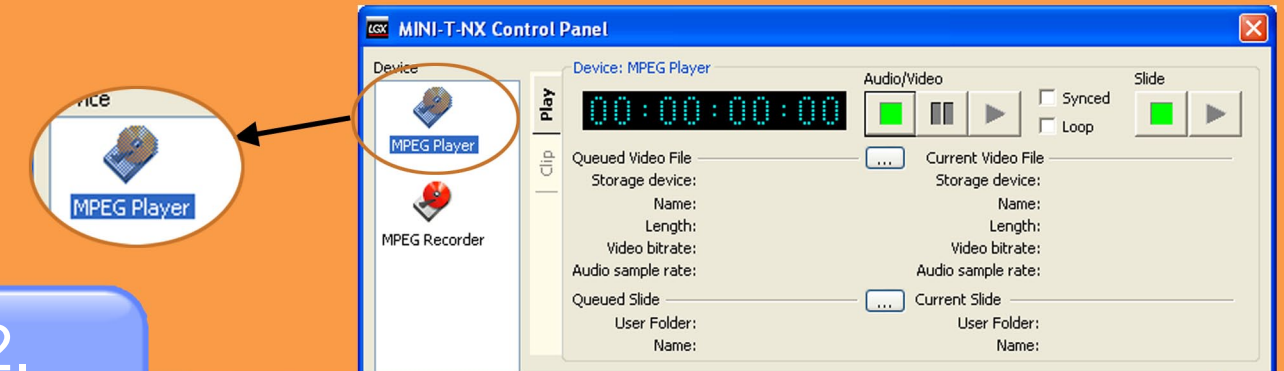
Drag the slide library resources you have created onto your schedule, referring to the "WinLGX Scheduling Quick Guide" for more detailed scheduling instructions. Slide resources are particularly handy for filling schedule switchback intervals.

IMMEDIATELY DISPLAYING SLIDES

Use the control panel to immediately display a slide on your internal MPEG player(s).

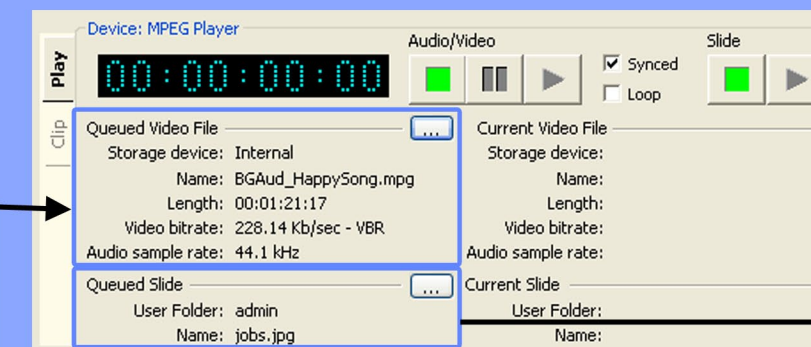
1.

Select "Control Panel" from the "Tools" menu to display the corresponding window. In the "Device" column, select the "MPEG Player" icon.



2.

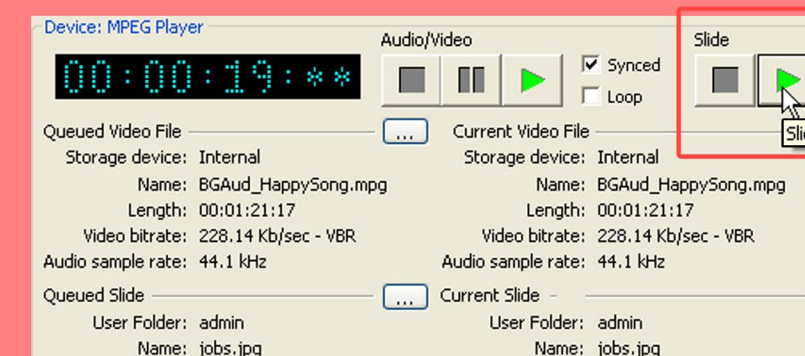
Queue a JPEG slide for display according to the following steps.



Queue a slide: click the ellipsis button next to "Current Slide" to open the "Select File" slide window. Select your slide in the "Select File" window and click "OK." You will see the slide's filename and user folder under "Queued Slide."

Queue an MPEG audio file, if you would like audio to play with the slide: check the "Synced" box. Click the ellipsis button next to "Current Video File" to open the "Select File" video window. Select an audio file and click "OK." You will see your MPEG file's filename and properties under "Queued Video File."

3.



Use the controls under "Slide" to play and stop your slide and audio background.